

# 26-1700 Series

## Regulators - Relief / Backpressure

D26170543X012

### Specifications

For other materials or modifications, please consult TESCO.

#### OPERATING PARAMETERS

Pressure rating per criteria of ANSI/ASME B31.3

**Maximum Inlet Pressure**

10,000 psig / 689 bar

**Controlled Pressure Ranges**

5-500, 5-800, 10-1500, 15-2500, 25-4000, 50-6000,  
and 200-10,000 psig

0.35-34.5, 0.35-55.2, 0.69-103, 1.03-172, 1.72-276, 3.45-414,  
and 13.8-689 bar

**Design Proof Pressure**

150% maximum rated

**Leakage**

Bubble-tight

**Operating Temperature**

-40°F to 165°F / -40°C to 74°C

**Flow Capacity**

$C_v = 0.10$  (26-17X1 through 26-17X4)

$C_v = 0.14$  (26-17X5 through 26-17X7)

**Maximum Operating Torque**

40 in-lbs / 4.5 N•m



TESCOM 26-1700 Series regulator controls pressures up to 15,000 psig / 1034 bar and is suitable for gas or liquid service.

#### MEDIA CONTACT MATERIALS

**Back-up Ring**

Teflon®

**Body**

316 Stainless Steel

**O-Rings**

Buna-N

**Seal**

CTFE

**Seat**

CTFE (26-17X1 through 26-17X4)

Teflon® (26-17X5 through 26-17X7)

**Trim**

300 Series Stainless Steel

**Remaining Parts**

300 Series Stainless Steel

#### OTHER

**Cleaning**

CGA 4.1 and ASTM G93

**Weight**

5 lbs / 2.2 kg

Teflon® is a registered trademark of E.I. du Pont de Nemours and Company.

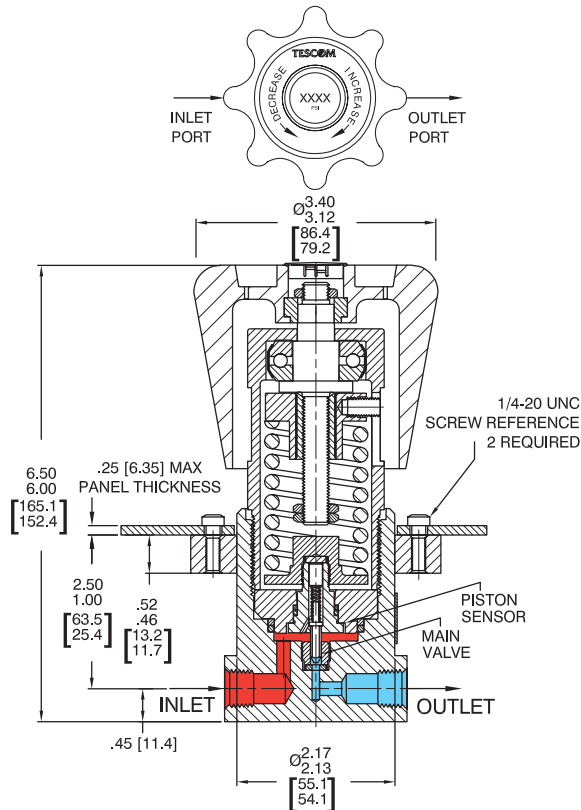
### Applications

- Pump discharge pressure control
- Reactor pressure control
- Over-pressurization relief

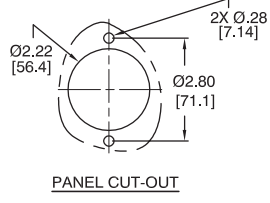
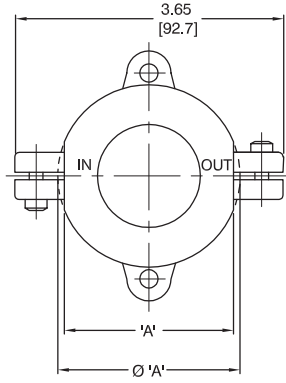
### Features and Benefits

- Accuracy:  $\pm 1\%$  of central pressure range
- NACE Compatible design available
- Wide range of applications due to:
  - Seven different control pressure ranges
  - 200-15,000 psig / 13.8-1034 bar control is optional
  - High flow  $C_v = 0.60$  and low flow  $C_v = 0.02$  models are available
- Bubble-tight shut-off at all reseal pressures
- Safe and reliable piston-style sensor
- Panel mounting is standard
- Compatible with TESCO Air Actuators and ER5000 Electropneumatic Controllers

26-1700 Series Regulator Drawing



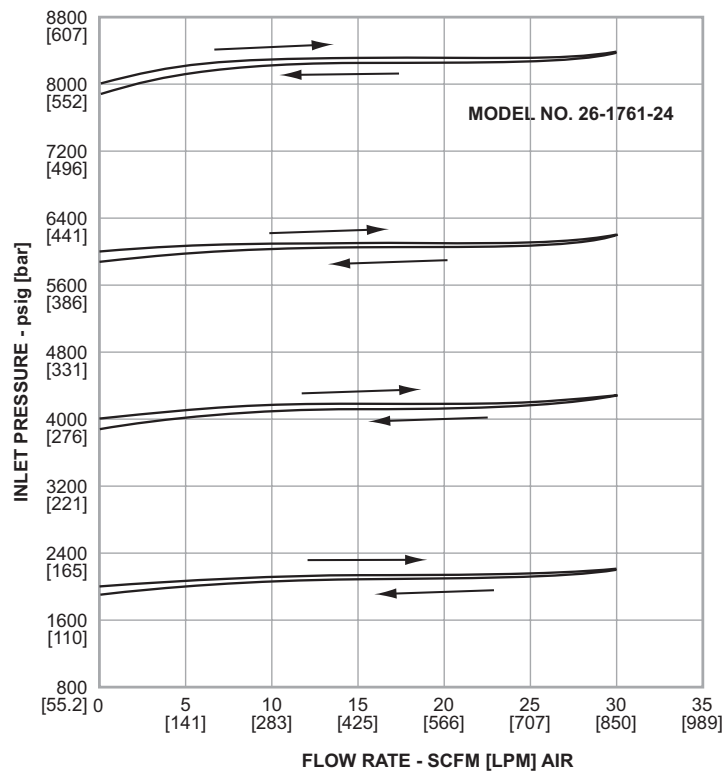
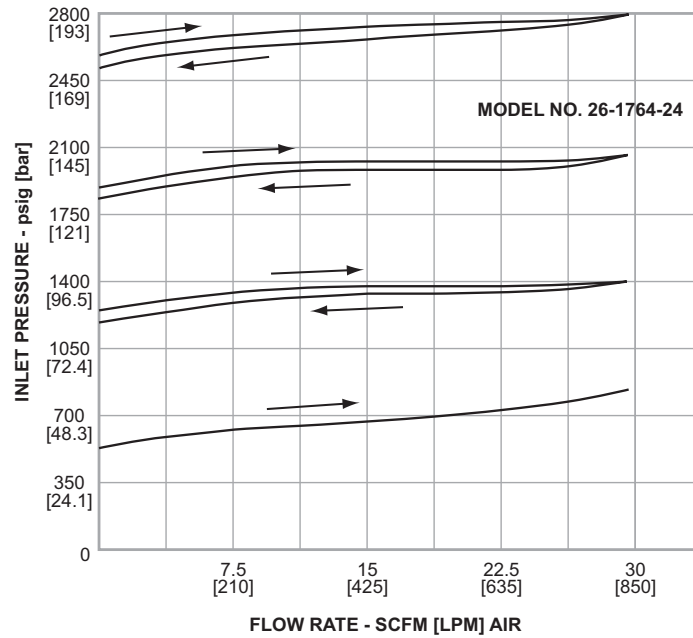
INLET AND OUTLET PORT	*A*
1/4 EXCEPT NPTF	2.30
1/4 AND 3/8 NPTF	Ø 2.48
3/8 MEDIUM AND HIGH PRESSURE	3.08
1/2 NPTF	3.33



All dimensions are reference & nominal  
Metric [millimeter] equivalents are in brackets

## 26-1700 Series Regulator Flow Charts

For more information on how to read flow curves, please refer to the Flow Curves and Calculations document (debul2007x012) in the TESCOM catalog or on [www.tescom.com](http://www.tescom.com).



## 26-1700 Series Regulator Part Number Selector

Repair Kits, Accessories & Modifications may be available for this product. Please contact TESCOM for more information.

Example for selecting a part number:

26-17                    6                    4                    -                    2                    4                    [BLANK]

BASIC SERIES	BODY AND BONNET MATERIAL	CONTROLLED PRESSURE RANGES	INLET AND OUTLET PORT TYPE	INLET AND OUTLET PORT SIZE	OPTIONS (ADDITIONAL TO STANDARD AS MODIFICATION)
26-17	6 – 316 Stainless Steel	1 – 200-10,000 psig 13.8-689 bar 2 – 50-6000 psig 3.45-414 bar 3 – 25-4000 psig 1.72-276 bar 4 – 15-2500 psig 1.03-172 bar 5 – 10-1500 psig 0.69-103 bar 6 – 5-800 psig 0.35-55.2 bar 7 – 5-500 psig 0.35-34.5 bar	1 – SAE 2 – NPTF 3 – MS33649 4 – High Pressure 6 – Medium Pressure	2 – 1/8" 4 – 1/4" 6 – 3/8" 8 – 1/2"*	[BLANK] – No modification - 065 – 316 Stainless Steel Wetted - 099 – 200-15,000 psig / 13.8-1034 bar Control Range, C <sub>v</sub> = 0.02 - 154 – C <sub>v</sub> = 0.02 - 161 – Urethane O-Rings CO <sub>2</sub> Service - 184 – C <sub>v</sub> = 0.60, 5000 psig / 345 bar, 1/2" NPTF Ports

\* Available for NPTF only.

 **WARNING!** Do not attempt to select, install, use or maintain this product until you have read and fully understood the *TESCOM Safety, Installation and Operation Precautions*.