

## High Pressure OEM Valves

## Series 6140, 6180, 6900, 6940

Patent# 3,014,499

### Features

- ▶ Original Shear-Seal® technology
- ▶ Low pressure drop
- ▶ Tolerates contaminants
- ▶ Spring return option
- ▶ Flexible design for OEM requirements

### Applications

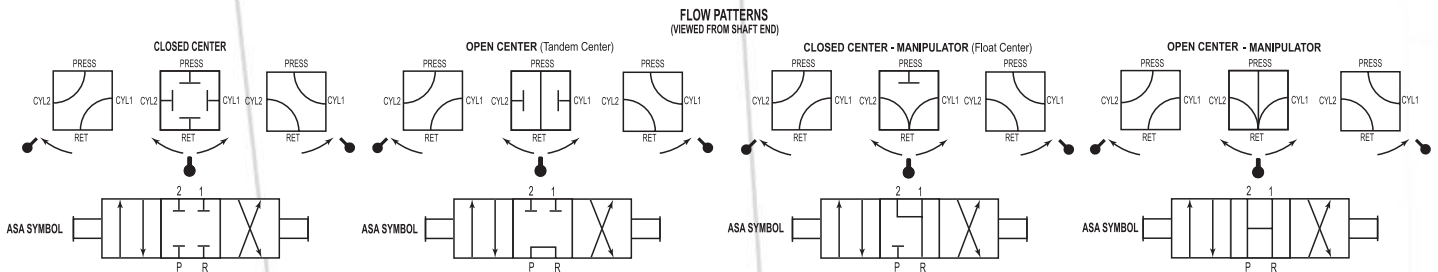
- ▶ Hydraulic presses
- ▶ Military equipment
- ▶ Paper mill controls
- ▶ Hydraulic pilot valves
- ▶ Railroad maintenance equipment
- ▶ Halon fill systems



### General Specifications\*

<b>Working Pressure:</b>	Hydraulic fluid up to 3000 psi (206 bar)	<b>Media Temperature Range:</b>	-40° to +250°F (-40° to +121°C)
<b>Flow Capacity, Cv:</b>	See table	<b>Wetted Material:</b>	
<b>Back Pressure:</b>	Must not exceed 250 psi (17.2 Bar) at return port for satisfactory operation	Rotor:	Hard anodized aluminum
<b>Pressure Drop:</b>	14 psi (0.96 bar) at 20 ft/sec See Supplemental Guide for more detailed information	Pressure Seals:	Brass
<b>Proof Pressure:</b>	1-1/2 times working pressure except at return port	Shaft:	Stainless steel
<b>Burst Pressure:</b>	2-1/2 times working pressure except at return port (3000 psi [206 bar])	Body Housing:	Anodized aluminum
		Bearings:	Carbon steel
		Standard O-rings:	Buna N, others available
		Back-up Rings:	Teflon®

\* See product configurator for additional options.



Main Valve Port Size	Flow Capacity (Approx.) Service: Oil			Min. Flow Passage Dia.	Cv Factor	Approx. Shipping Weight lbs (kgs)
	20 ft/sec gpm (l/min)	40 ft/sec gpm (l/min)	60 ft/sec gpm (l/min)			
1/4" & 3/8"	5 (19)	10 (38)	Use	5/16"	1.56	1 1/2 (0.7)
1/2" & 3/4"	14 (53)	28 (106)	Heavy	17/32"	4.80	3 (1.4)
1"	25 (95)	51(190)	Duty	23/32"	9.20	10 1/2 (4.6)
1-1/2"	62 (235)	124 (471)	Valve	1-1/8"	24.0	20 (9.1)

**Barksdale**  
CONTROL PRODUCTS

Barksdale, Inc./Barksdale GmbH  
A Subsidiary of Crane Co.

